

FOR MORE INFORMATION
ON AMNESTY

AllianceOne
(If Your Case is in Collection)

877-541-8420

Central Traffic - Kearny Mesa

858-634-1800

Monday-Friday 8:30 a.m.-11:30 a.m.

East County Division

619-456-4100

Monday-Friday 8:30 a.m.-11:30 a.m.

South County Division

619-746-6200

Monday-Friday 8:30 a.m.-11:30 a.m.

North County Division

760-201-8500

Monday-Friday 8:30 a.m.-11:30 a.m.



**Clear Up Your Traffic Ticket
&
Restore Your Driver's License**



On June 24, 2015, the Governor signed into law a one-time amnesty program for unpaid traffic and non-traffic infraction tickets.

The program runs from

**October 1, 2015
through
March 31, 2017.**



**TRAFFIC TICKET
&
INFRACTION
AMNESTY
PROGRAM**

Ticket Amnesty Program

You might be eligible for a
50% or 80% Reduction!

To qualify for a reduction of the amount owed, all of the following conditions must be met:

- ✓ You have an unpaid ticket with an initial due date on or before January 1, 2013.
- ✓ The last date you made a payment was on or before September 30, 2015.
- ✓ You don't owe restitution to a victim on any case in the county where the violation occurred.
- ✓ You have no outstanding misdemeanor or felony warrants in the county where the violation occurred.

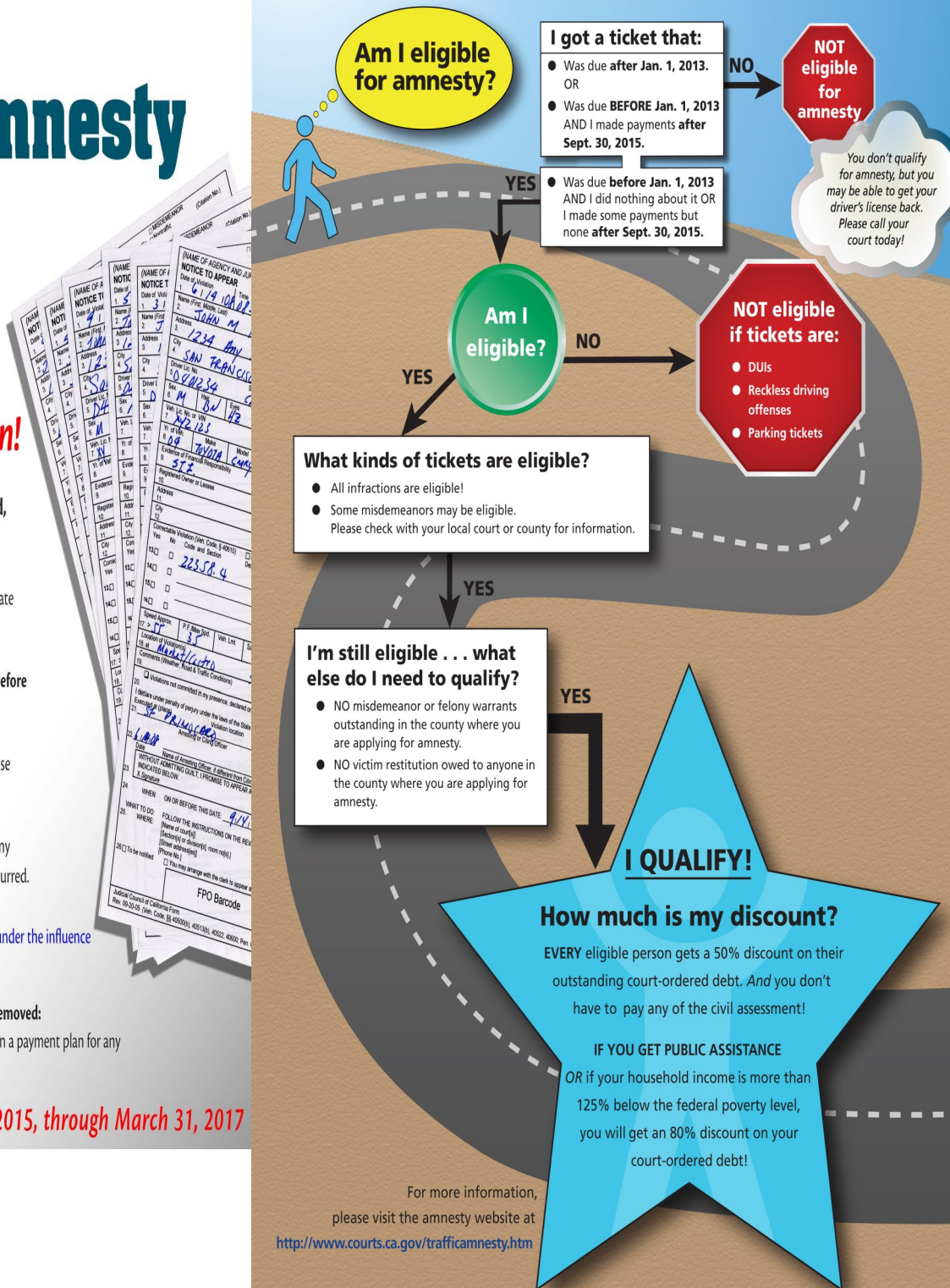
Not Eligible: Parking tickets or violations for driving under the influence (DUI) or reckless driving.

You may be eligible to have a driver's license hold removed:

If you are approved for amnesty and you are current on a payment plan for any infraction tickets due **after January 1, 2013**.

Program runs from October 1, 2015, through March 31, 2017

YOUR PATH TO THE TICKET AMNESTY PROGRAM!



For more information,
please visit the amnesty website at
<http://www.courts.ca.gov/trafficamnesty.htm>

How to Restore Your Driver's License!

You might be eligible to have your
driver's license hold removed!

To qualify for a reinstatement of your driving privileges, the following two conditions must be met:

- ✓ A driver's license hold or suspension was imposed because you **Failed to Appear** in court or **Failed to Pay** your ticket.
- ✓ You are in good standing with your court-ordered payments and obligations for the violation(s).

If both of these are true, ask the court that placed the hold on your driver's license about having it removed.

NOTE: If payment of your ticket was due on or before January 1, 2013 and you have not paid the ticket, check with your court to see if you are eligible for a reduction in the amount you owe under the amnesty program. If you qualify for amnesty, you automatically qualify to have the hold on your driver's license removed!

For more information, contact:

AllianceOne (if your case is in collection) 877-541-8420
Central Traffic (KMF) 858-634-1800, Monday-Friday 8:30 a.m.-11:30 a.m.
East County 619-456-4100, Monday-Friday 8:30 a.m.-11:30 a.m.
South County 619-746-6200, Monday-Friday 8:30 a.m.-11:30 a.m.
North County 760-201-8500, Monday-Friday 8:30 a.m.-11:30 a.m.

